

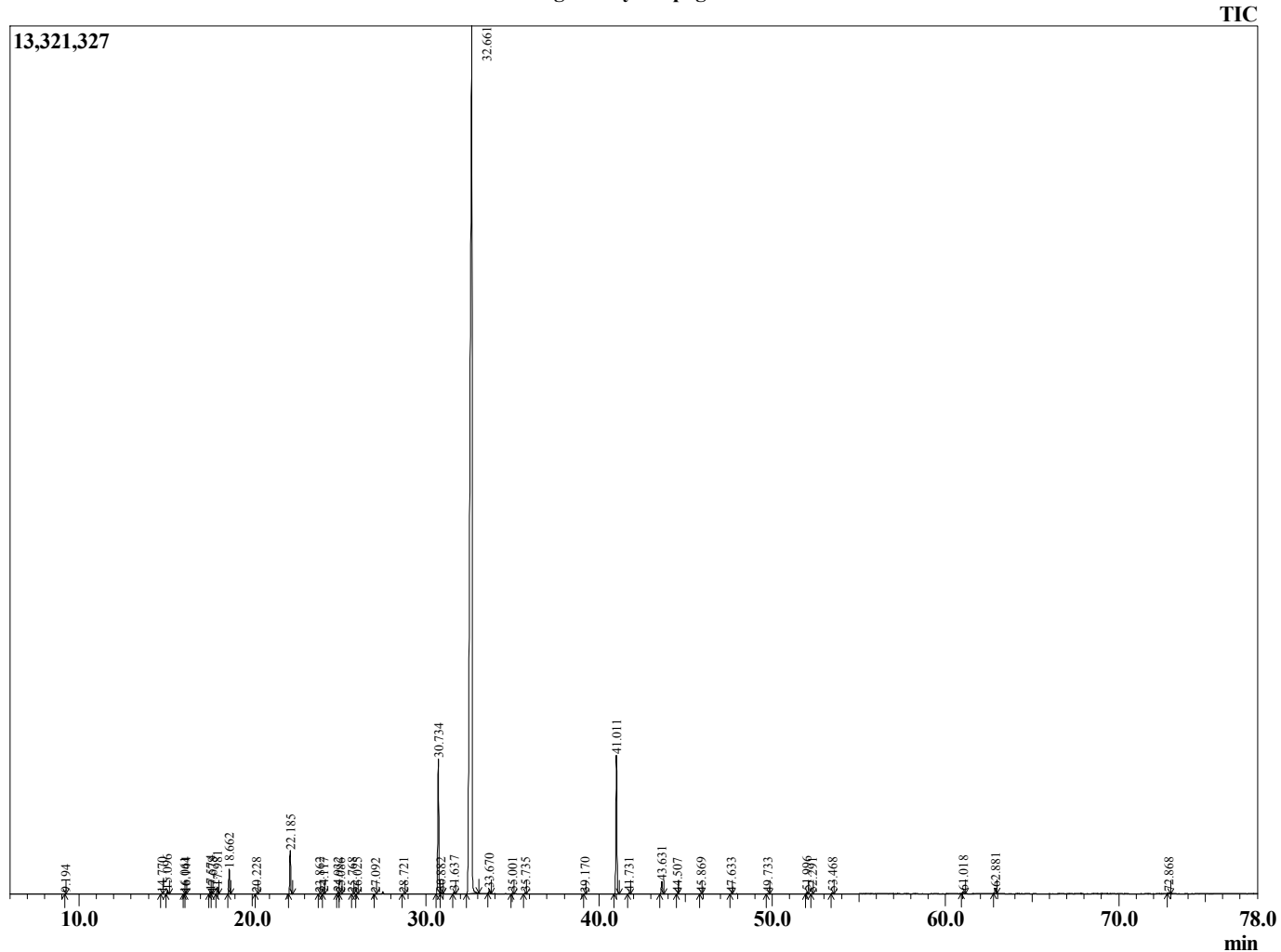
Sample Information

Sample Type : Essential Oil
 Sample Name : Cymbopogon martinii
 Injection Volume : 0.10

Palmarosa
 Lot# NEK16-KW
 Country: Nepal



Chromatogram Cymbopogon martinii



R.Time	Name	Area%
4.918	1-Pentanol	0.01
9.194	Isopentyl acetate	0.01
14.770	6-Methyl hept-5-en-2-one	0.04
15.096	Myrcene	0.17
16.061	Unidentified	0.02
16.144	alpha-Phellandrene	0.01
17.574	Limonene	0.10
17.678	beta-Phellandrene	0.02
17.981	cis-beta-Ocimene	0.29
18.662	trans-beta-Ocimene	1.02
20.228	cis-Linalool oxide (furanoid)	0.03
22.185	Linalool	1.93
23.862	cis-para-Menth-2-en-1-ol	0.02
24.117	allo-Ocimene	0.05
24.932	neo-allo-Ocimene	0.06
25.086	trans-para-Menth-2-en-1-ol	0.02
25.768	Citronellal	0.02
26.025	Menthone	0.02
27.092	para-Mentha-1,5-dien-8-ol	0.01
28.721	alpha-Terpineol	0.04
30.734	Nerol	6.53
30.882	Citronellol	0.07
31.637	Neral	0.10
32.661	Geraniol	80.76
33.670	Geranial	0.19
35.001	Unidentified	0.04
35.735	Geranyl formate	0.05
39.170	Unidentified	0.02
41.011	Geranyl acetate	6.86
41.731	beta-Elemene	0.05
43.631	beta-Caryophyllene	0.66
44.507	trans-alpha-Bergamotene	0.01
45.869	alpha-Humulene	0.04
47.633	beta-Chamigrene	0.02
49.733	delta-Cadinene	0.04
51.996	Geranyl butyrate	0.11
52.291	trans-Nerolidol	0.02
53.468	Caryophyllene oxide	0.07
61.018	(2E,6E)-Farnesol	0.13
62.881	Geranyl hexanoate	0.32
72.868	Unidentified	0.06
		100.00